

9/13.
PR-SFC-9
01-08-24



ଓଡିଶା ସରକାର
ପଞ୍ଚାୟତିରାଜ ଓ ସାମାଜିକ କ୍ଷେତ୍ର ବିଭାଗ
Government of Odisha
Panchayati Raj & D.W Department

ଓଡିଶା ଲୋକସେବା ଭବନ
ସଚିବାଳୟ ମାର୍ଗ, ଭୁବନେଶ୍ୱର-୭୫୧୦୦୧
Odisha Lok Seva Bhawan,
Sachibalaya Marg
Bhubaneswar - 751001
Fax. 0674 - 2391413
E-mail-prsec.or@nic.in

No. 17052 /PR &DW,
PR-SFC-SCHEME-0001-2023

Dt. 01.08.2024

From

Smt. Gitanjali Naik, OAS
Addl. Secretary to Government.

To

All Collector-cum-CEOs, Zilla Parishad
All CDO-cum-EOs, Zilla Parishad

Sub: Approval of projects under Construction of Vana Surakshya Samiti (VSS) buildings for the F.Y. 2024-25

Ref: This Deptt. resolution No. 16268 Dtd. 27.07.2023

Madam/Sir,

In inviting a reference to the subject and letter cited above, I am directed to say that Government have been pleased to approve 2279 Nos. of projects towards "Construction of Vana Surakshya Samiti (VSS) buildings" for the F.Y. 2024-25 as enclosed at Annexure-"B". The execution of the projects is subject to the following terms and conditions:

1. The projects shall be executed as per guidelines issued by this Department resolution No. 16268 Dtd. 27.07.2023
2. The unit cost of a project is Rs. 8.50 lakh .
3. Selection of sites for Construction of VSS buildings shall be done by Divisional Forest Officer in consultation with local Tahasildar and the selected site shall be intimated to the Block Development Officer concerned .
4. Non-Repetition of project must be ensured.
5. No diversion of funds for any other purpose is acceptable and no excess amount beyond the approved cost shall be spent.

Therefore, you are requested to take necessary steps towards early execution of the approved projects . The funds to execute the projects shall be released by this Deptt. shortly .

Yours faithfully,

01.08.2024
Addl. Secretary to Govt.

20	Koraput	Bandhuagaon	7
	Koraput	Boipariguda	47
	Koraput	Dasmantpur	4
	Koraput	Koraput	6
	Koraput	Kotpad	16
	Koraput	Kundra	7
	Koraput	Lamtaput	8
	Koraput	Laxmipur	3
	Koraput	Nandapur	7
	Koraput	Narayanpatna	4
	Koraput	Pottangi	5
	Koraput	Semiliguda	4
Total			118
21	Malkangiri	Kalimela	35
	Malkangiri	Mathili	35
Total			70
22	Mayurbhanj	Bahalda	3
	Mayurbhanj	Bijatata	14
	Mayurbhanj	Bisoi	9
	Mayurbhanj	Jamda	4
	Mayurbhanj	Jashipur	34
	Mayurbhanj	Karanja	7
	Mayurbhanj	Kusumi	26
	Mayurbhanj	Rairangpur	9
	Mayurbhanj	Saraskana	3
	Mayurbhanj	Thakurmunda	27
	Mayurbhanj	Tiring	2
	Mayurbhanj	Badasahi	11
	Mayurbhanj	Bangriposi	3
	Mayurbhanj	Baripada	2
	Mayurbhanj	Betnoti	4
	Mayurbhanj	Kaptipada	9
	Mayurbhanj	Khunta	1
	Mayurbhanj	Kuliana	13
	Mayurbhanj	Morada	3
	Mayurbhanj	Rasgobindpur	3
	Mayurbhanj	Saraskana	7
Mayurbhanj	Suliapada	3	
Mayurbhanj	Udala	1	
Total			198
23	Nabarangpur	Chandahandi	4
	Nabarangpur	Dabugam	9
	Nabarangpur	Jharigam	9
	Nabarangpur	Kosagumuda	11
	Nabarangpur	Nabarangpur	2
	Nabarangpur	Nandahandi	1
	Nabarangpur	Papadahandi	11
	Nabarangpur	Raigarh	9
	Nabarangpur	Tentulikhunti	3
	Nabarangpur	Umerkote	10
Total			69

1.8.24

SL No.	Name of the District	Name of the Division	Name of the Range	Name of the CD Block	Gram Panchayat	Village	Name of the VSS where the VSS Building are proposed to be constructed during 2024-25
1693	MAYURBH ANJA	BARIPADA	Bangriposi	Bangriposi	Banakati	Punasia	Punasia VSS
1694	MAYURBH ANJA	BARIPADA	Bangriposi	Bangriposi	Kalabadia	Mahulisole	Mahulisole VSS
1695	MAYURBH ANJA	BARIPADA	Bangriposi	Saraskana	Silfodi	Silfodi	Silfodi VSS
1696	MAYURBH ANJA	BARIPADA	Bangriposi	Saraskana	Joka	Bhalukdihi	Bhalukdihi
1697	MAYURBH ANJA	BARIPADA	Bangriposi	Saraskana	Joka	Karandihi	Karandihi
1698	MAYURBH ANJA	BARIPADA	Bangriposi	Saraskana	Jharpokharia	Baliasahi	Baliasahi VSS
1699	Nabarangpur	Nabarangpur	Nabarangpur	Nabarangpur	Agnipur	Khandaguda	Khandaguda
1700	Nabarangpur	Nabarangpur	Nabarangpur	Nabarangpur	Taragam	Patramunda	Patramunda
1701	Nabarangpur	Nabarangpur	Nabarangpur	Papadahandi	Patri	Mundaguda	Mundaguda
1702	Nabarangpur	Nabarangpur	Nabarangpur	Papadahandi	Patri	Moharaguda	Moharaguda
1703	Nabarangpur	Nabarangpur	Nabarangpur	Papadahandi	Naktiguda	Disariguda	Disariguda
1704	Nabarangpur	Nabarangpur	Nabarangpur	Nandahandi	Jhadabandhuguda	Muduliguda	Muduliguda
1705	Nabarangpur	Nabarangpur	Nabarangpur	Tentulikhunti	Lamtaguda	Kanheimunda	Kanheimunda
1706	Nabarangpur	Nabarangpur	Kodinga	Kosagumuda	Badaambada	Kidripali	Kidripali
1707	Nabarangpur	Nabarangpur	Kodinga	Kosagumuda	Balenga	Balenga	Balenga
1708	Nabarangpur	Nabarangpur	Kodinga	Kosagumuda	Ekori	Alekhguda	Alekhguda
1709	Nabarangpur	Nabarangpur	Kodinga	Kosagumuda	Balenga	Miriminda	Miriminda
1710	Nabarangpur	Nabarangpur	Kodinga	Kosagumuda	Balenga	Bodaguda	Bodaguda
1711	Nabarangpur	Nabarangpur	Kodinga	Kosagumuda	Motigam	Phampuni	Phampuni
1712	Nabarangpur	Nabarangpur	Kodinga	Papadahandi	Sirsi	Chuimatiguda	Chuimatiguda
1713	Nabarangpur	Nabarangpur	Kodinga	Kosagumuda	Ponduguda	Badpur	Badpur
1714	Nabarangpur	Nabarangpur	Kodinga	Kosagumuda	Balenga	Mantriguda	Mantriguda
1715	Nabarangpur	Nabarangpur	Kodinga	Kosagumuda	Pharsaguda	Bandiguda	Bandiguda
1716	Nabarangpur	Nabarangpur	Kodinga	Kosagumuda	Kodinga	Dumadei	Dumadei
1717	Nabarangpur	Nabarangpur	Kodinga	Papadahandi	Dongra	Dongra	Dongra
1718	Nabarangpur	Nabarangpur	Kodinga	Kosagumuda	B.M.Semla	Borawada	Borawada
1719	Nabarangpur	Nabarangpur	Jharigam	Jharigam	Chakalapadar	Bharuamunda	Bharuamunda
1720	Nabarangpur	Nabarangpur	Jharigam	Jharigam	Chakalapadar	Kongra	Kongra
1721	Nabarangpur	Nabarangpur	Jharigam	Jharigam	Ichhapur	Ichhapur	Ichhapur

[Handwritten signature]

Trace for construction of VSS building at Ichhapur

ଉ.
 ଉ.
 ଉ.
 ଉ.
 ଉ.

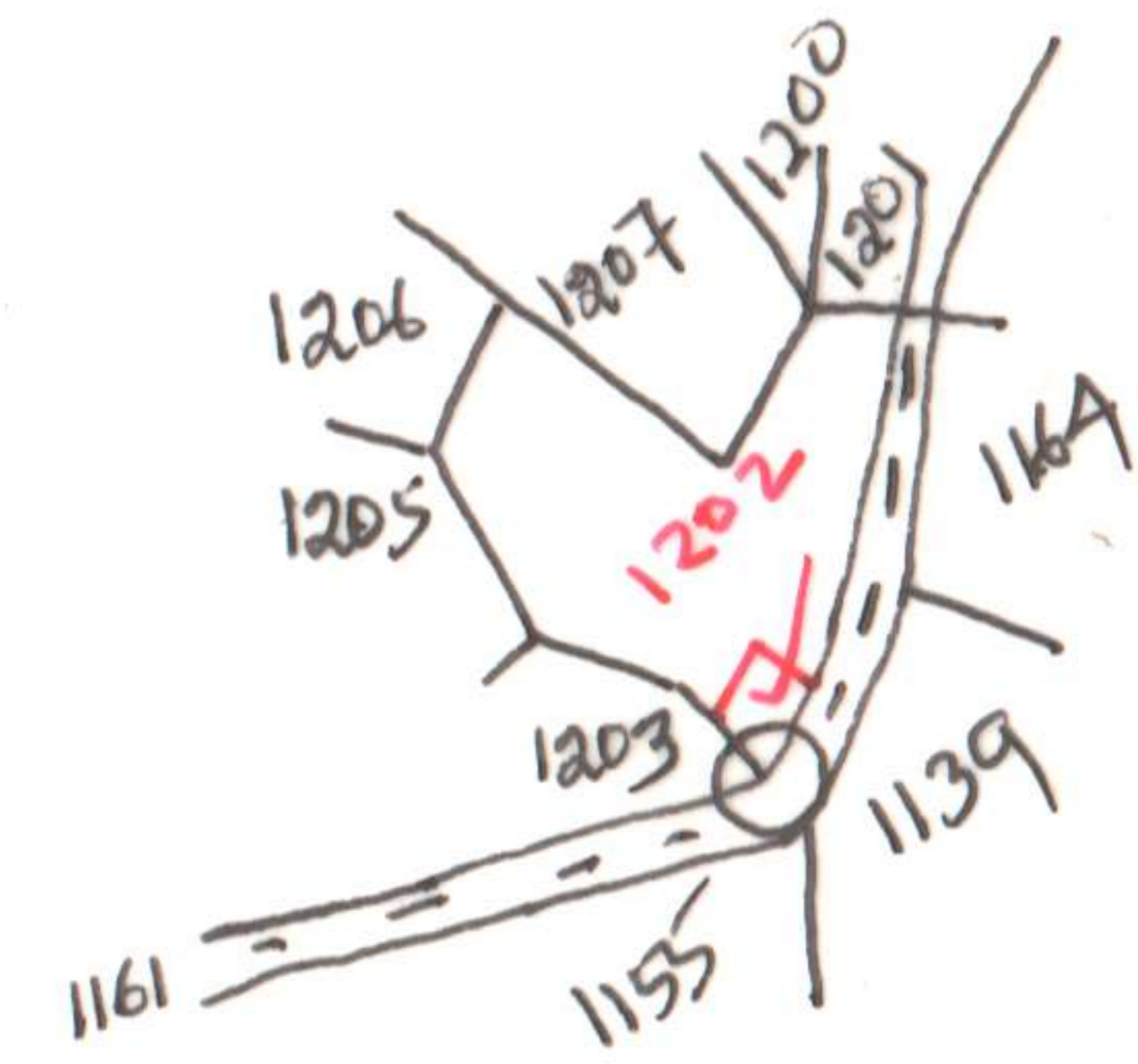
ଖୋଜା - ଉତ୍ପାଦନ

ସାଗା - ହରିଦା

ଫୁଲିଆ - ହରିଦା

ଜାଗା - ନିକାଶନ

ସେଲ 16" = 1 ମାତ୍ର



କ୍ର. ସଂଖ୍ୟା	ପ୍ଲଟ ନଂ	ଫାୟିଲ ନଂ	ସ୍ୱତ୍ୱ	ଫିଲ୍ଡ ନଂ	ବିବରଣ
୩୩୬ (୧-୬-୩-୩)	1202		ପୂର୍ଣ୍ଣ	AC.0.82 AC.0.04	ଉ- ଉତ୍ପାଦନ ନ- ନିକାଶନ ଫୁ- ଫୁଲିଆ ସା- ସାଗା ନିକାଶନ

(Signature)

Revenue Inspector
Jharigam