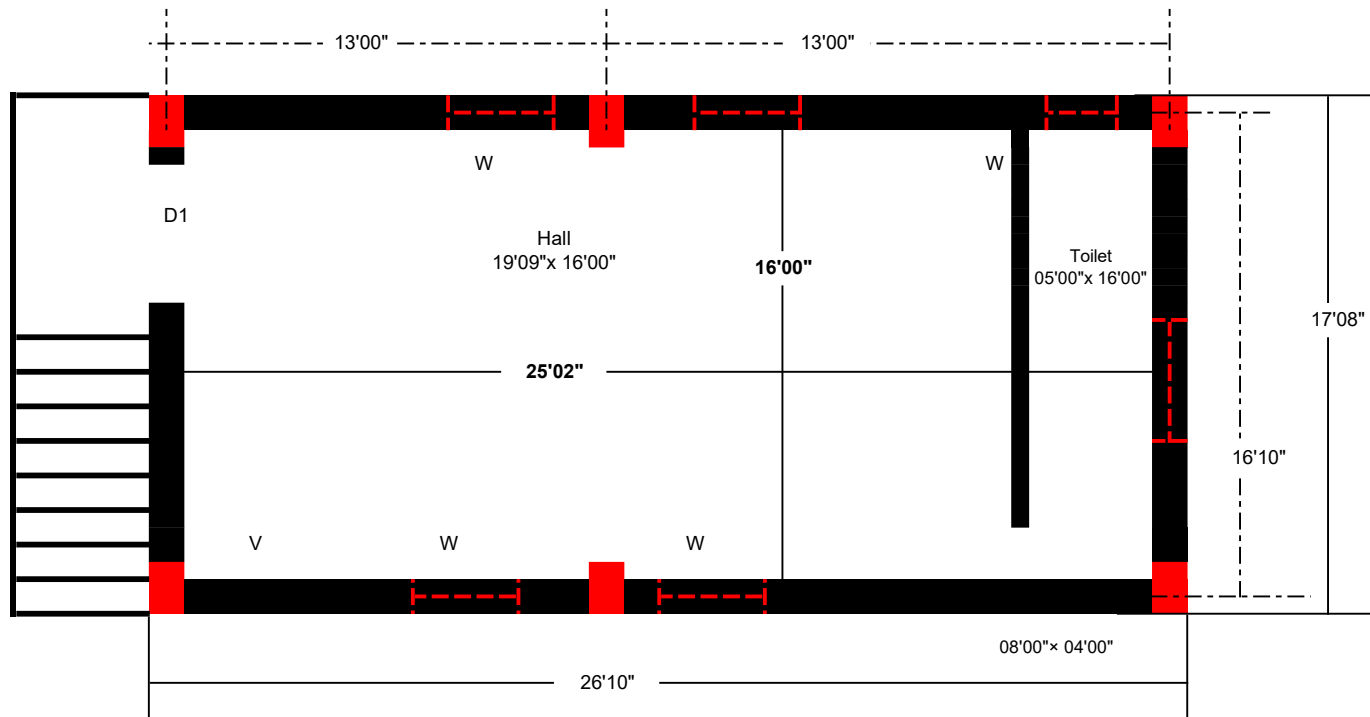


GP FACILITY CENTER, Jajespanga



Specification Details

- Footing- 05'00"× 05'00"× 01'03", 6Nos
- Columns- 15"×10" , 6Nos
- Plinth Beam- 10"×15"
- Roof Beam- 10"×15"
- Lintle- 10"×06"
- Window- 05'00"× 04'00", 4Nos
- Door- 04'00"× 07'00", 2Nos
- Slab Thickness- 05"
- Floor Top to Roof Slab Bottom Ht. - 10'06"
- Colm Excavation- 05'00"× 05'00"× 05'00"
- Colm Reinforcement- 6 nos 16mm Ø, Ring 6" C/C
- P.Beam & R.Beam Reinforcement- 5nos 16mm Ø, 2nos 12mm Ø with exctra top 08' in Length

Junior Engineer,
Phiringia Block

Asst. Ex. Engineer,
Phiringia Block

Block Development Officer
Phiringia Block