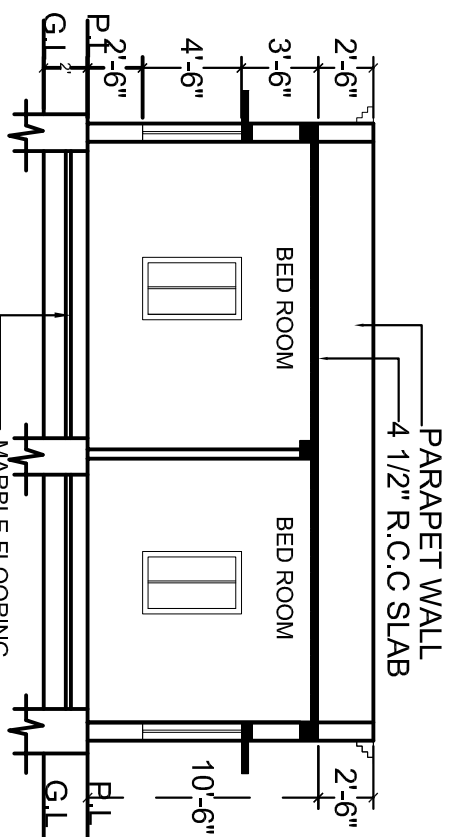


FRONT ELEVATION



SECTION AT-BB

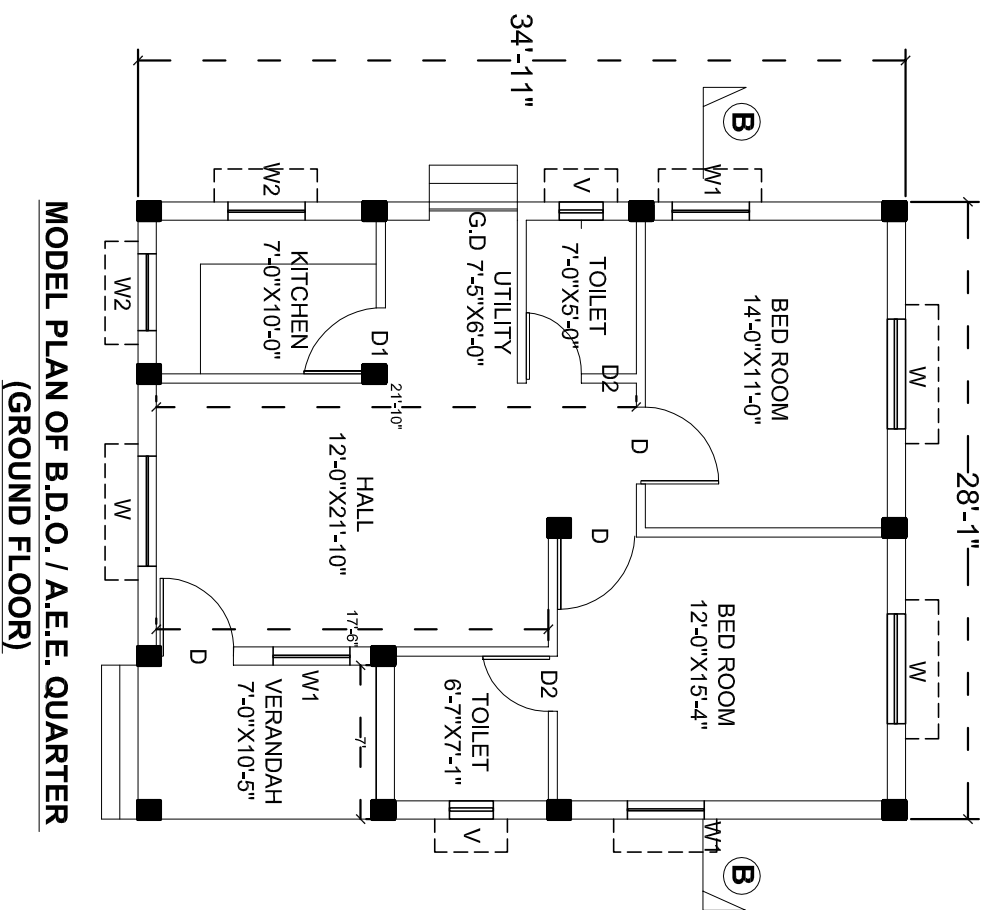
S.L. NO	TYPE	B	H	SILL LEV.	NOTE :-
1	D	3'-3"	7'-0"	-	1. Written dimensions in the drawing must be followed.
2	D1	3'-0"	7'-0"	-	2. All measurements must be checked before execution.
3	D2	2'-6"	7'-0"	-	3. Proper design should be made for foundation of double storeyed building before the execution of work as per soil condition for frame structure.
4	G.D	4'-0"	7'-0"	-	4. RCC/aluminium/U.P.V.C material should be used in all door/window frame.
5	W	5'-0"	4'-6"	2'-6"	5. Aluminium frame empanelled with glass/laminated play should be used in alldoor/window shutter.
6	W1	3'-6"	4'-6"	2'-6"	
7	W2	3'-6"	3'-6"	3'-6"	
8	V	2'-0"	2'-0"	5'-0"	

TITLE -

REVISED MODEL PLAN OF B.D.O. / A.E.E. QUARTER
(GROUND FLOOR)
TOTAL PLINTH AREA=980.55 SQ.FT.

GOVT. OF ODISHA, PANCHAYATIRAJ & DRINKING WATER DEPARTMENT

JUNIOR ENGINEER (PR& DW DEPT.)	ASSISTANT ENGINEER (PR& DW DEPT.)	SUPERINTENDING ENGINEER (PR& DW DEPT.)
SCALE N.T.S	DATE- 07/09/2017	DRAWN BY. P.K. MISHRA
		DRG.NO PR/06/2017



MODEL PLAN OF B.D.O. / A.E.E. QUARTER
(GROUND FLOOR)