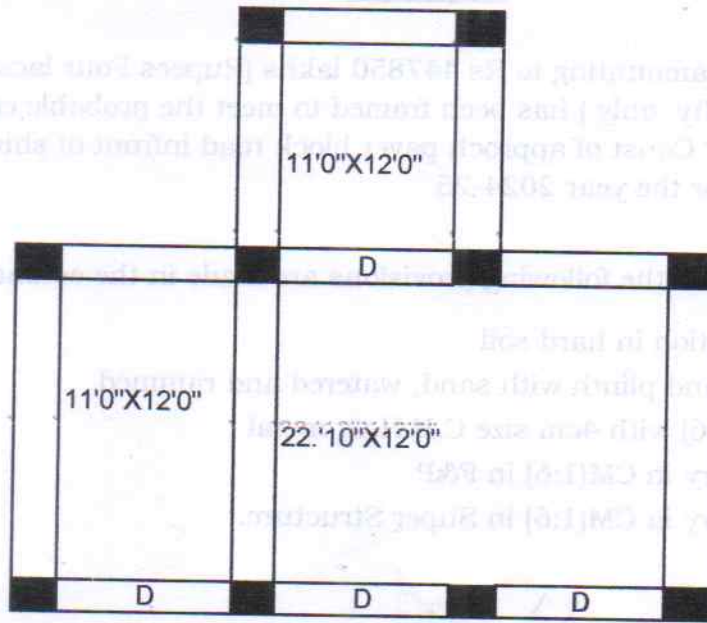


NOTE TO SCALE



This estimate has been prepared as per current schedule of rates 2014 & material analysis of rates 2006 with MORT GST @ 12% and specifications will be followed during the execution of work.

col 10 no
shutter4no

0'10"x0'10"
7'0"x7'0"

Box Government Office
Kuala Lumpur

Assistant Engineer
Kuala Lumpur

Chief Engineer
Kuala Lumpur