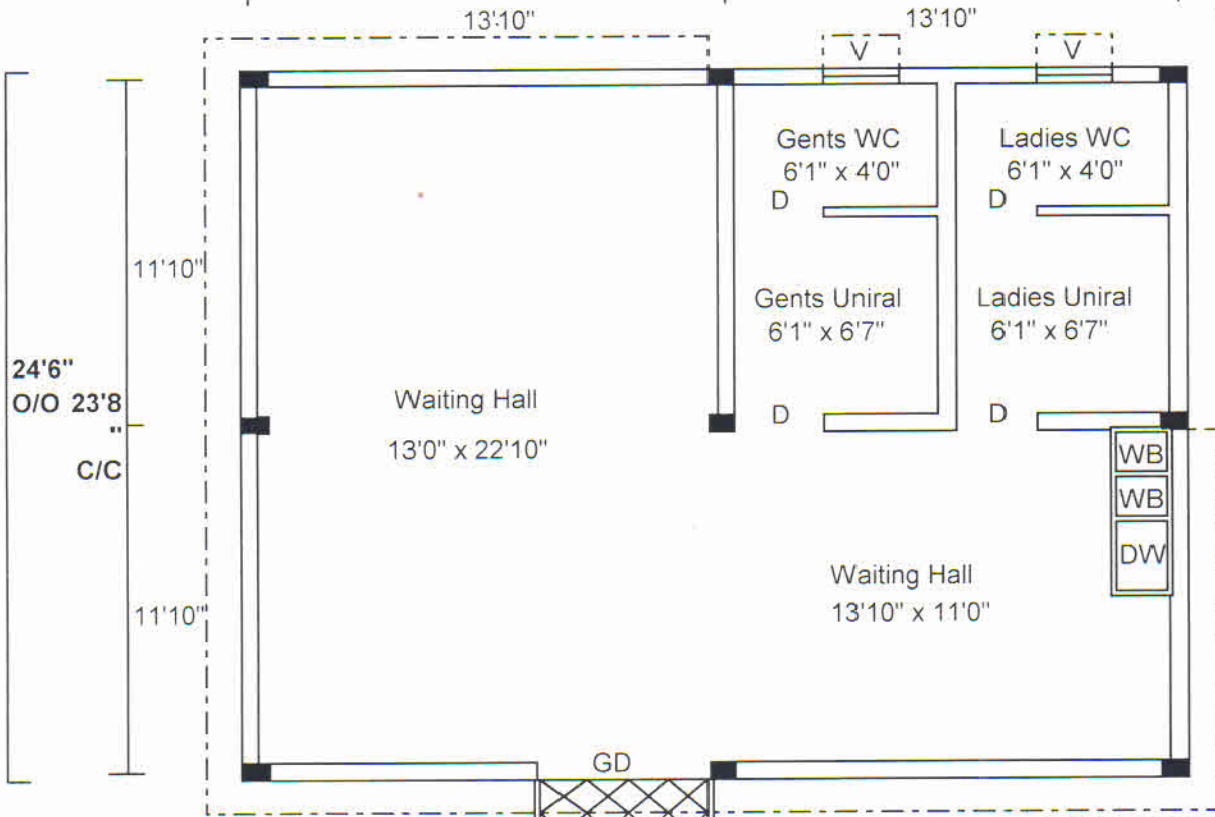
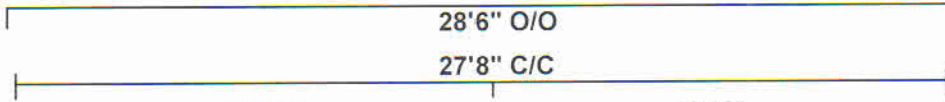


# Model Plan of GP Facilities Centre



**Front Sectional Elevation**



**Door & Window Specifications**

	Width	Height
D-	3'6"	7'0"
GD -	3'0"	7'0"
V-	3'0"	2'6"

**Referances**

Ground level to Plinth level height	= 2'6"
Lintel level height	= 7'0"
D.P.C. to Roof height	= 10'6"
Column size	= 10" x 15"
Outer side Beam in Lintel level	= 1'1" height
Roof thickness	= 5"

**GROUND FLOOR PLAN**

Plinth Area = 698.25 Sft.

(Not to Scale)

*[Signature]*  
09.12.20  
Junior Engineer  
PR & DW Deptt.

*[Signature]*  
9.12.20  
Superintending Engineer  
Panchayati Raj & Drinking Water Deptt.